

93-63-54-18RL
Advance Tabco

Regaline Sink, three compartment, w/left & right-hand drainboards, 24" front-to-back x 18" W compartment, 12" deep, with 8" high splash, s/s open frame base, side crossrails, 16/304 stainless steel, 18" drainboards, overall 31" F/B x 97" L/R



Total Sell: \$2,249.00 ea

94-3-54-18RL
Advance Tabco

Regaline Sink, three compartment, w/left & right-hand drainboards, 20" front-to-back x 16" W compartment, 14" deep, with 11" high splash, s/s open frame base, boxed crossrails, 18" drainboards, s/s bullet feet, 14/304 stainless steel, overall 27" F/B x 91" L/R



Total Sell: \$2,199.00 ea

DI-1-25
Advance Tabco

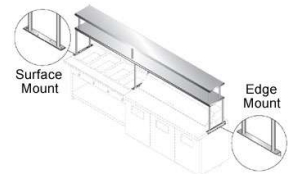
Drop-In Sink, one compartment, 9" wide x 9" front-to-back x 5" deep bowl, 20 gauge stainless steel, with deck mounted gooseneck faucet, basket drain



Total Sell: \$179.00 ea

CU-18-96
Advance Tabco

Shelf, single tier, to span over existing equipment (supplied by others), 18"W x 96"L (must provide equipment model numbers that shelf is going over to clarify mounting provision)



2 Tier Shelving Shown
 Shelves Sold Separately

Total Sell: \$888.00 ea

DTC-S60-48R-X
Advance Tabco

Straight-Clean Dishtable, left-to-right, 10-1/2" backsplash, 3" rolled front & side rims, galvanized legs, with no crossrails, 48" long, 16/304 stainless steel



Total Sell: \$564.00 ea

CDT-84-L-X
Elkay SSP LLC

Standard Clean Dishtable, straight design, right-to-left operation, 30" wide, 84" long, 10" high backsplash with 2" return, 16 gauge s/s top, galvanized legs with adjustable plastic feet (Flyer Pricing)



Total Sell: \$649.00 ea

**DTS-S60-48L-X
Advance Tabco**

Straight-Soil Dishtable, left-to-right, 10-1/2" backsplash, with pre-rinse sink, galvanized legs, with no crossrails, 48" long, 16/304 stainless steel

Total Sell: \$795.00 ea



**DTS-S60-36L
Advance Tabco**

Straight-Soil Dishtable, left-to-right, 10-1/2" backsplash, with pre-rinse sink, galvanized legs, with no crossrails, 35" long, 16/304 stainless steel

Total Sell: \$799.00 ea



**1872
Fisher**

Faucet, deck-mounted dual control, 6" swivel gooseneck spout, 1/2" inlet

Total Sell: \$98.00 ea



**2445
Fisher**

Service Sink Faucet, short spout, with vacuum breaker, 1/2" inlet, polished chrome

Total Sell: \$98.00 ea



**HW-4C-48
T & S Brass**

Connector Hose, water, 1/2"Diameter, 48"L, stainless steel braid with extruded coating, 1/2" M x 1/2" quick disconnect

Total Sell: \$129.00 ea



**HW-4B-60
T & S Brass**

Connector Hose, water, 3/8" diameter, 60"L, stainless steel braid with extruded coating, 3/8" M x 3/8" quick disconnect

Total Sell: \$119.00 ea



**FMS-242
Advance Tabco**

Work Table, 24" wide top with turned up edge at rear, 24" long, with adjustable undershelf, s/s frame & shelf, 16 gauge, type 304 stainless steel top, 1-1/2" rear splash, s/s bullet feet

Total Sell: \$429.00 ea



**SLAG-243-X
Advance Tabco**

Work Table, 24" wide top, without splash, 36" long, stainless steel frame & adjustable undershelf, 18 gauge, type 430 stainless steel top

Total Sell: \$329.00 ea



FMS-308
Advance Tabco

Total Sell: \$949.00 ea

Work Table, 30" wide top with turned up edge at rear, 96" long, with adjustable undershelf, s/s frame & shelf, 16 gauge, type 304 stainless steel top, 1-1/2" rear splash, s/s bullet feet



KMS-307
Advance Tabco

Total Sell: \$1,172.26 ea

Work Table, 30" wide top, with splash at rear only, 84" long, with adjustable undershelf, s/s frame & shelf, 16 gauge, type 304 stainless steel top, 5" backsplash, s/s bullet feet



TBS-366
Advance Tabco

Total Sell: \$1,449.00 ea

Bakers Top Work Table, 1-3/4" thick wood top, 36" wide top, w/splash at rear & both side, 72" long, s/s open base, with side and rear rails only, w/ 4" risers



NS2015
Advance Tabco

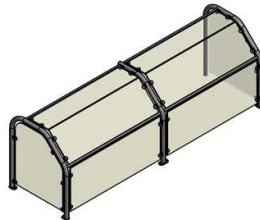
Total Sell: \$219.00 ea

Drawer for worktable, 20x15x5

CSG-4A
Atlas Metal

Total Sell: \$1,995.00 ea

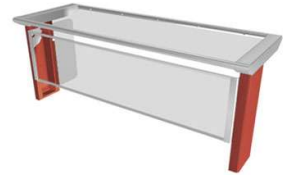
Custom Sneeze Guard, 63-1/4"L, single service, protector case, fixed 1/4" thick tempered glass front & 1/4" thick tempered glass top, 1" OD welded & polished s/s tubular frame, s/s mounting brackets



TS570-46
Duke Manufacturing

Total Sell: \$1,295.00 ea

Thurmaduke Designer Sneeze Guard, 45-5/8" long, service style, flip-up front glass, glass top, painted end panels and 1/4" acrylic end guards



WS-10-48
Advance Tabco

Total Sell: \$219.00 ea

Shelf, wall-mounted, stainless steel, 10" wide, 4 feet long



WS-10-60
Advance Tabco

Total Sell: \$299.00 ea

Shelf, wall-mounted, stainless steel, 10" wide, 5 feet long



**WS-10-72
Advance Tabco**

Shelf, wall-mounted, stainless steel, 10" wide, 6 feet long



Total Sell: \$249.00 ea

**WS-12-48
Advance Tabco**

Shelf, wall-mounted, stainless steel, 12" wide, 4 feet long



Total Sell: \$229.00 ea

**WS-12-60
Advance Tabco**

Shelf, wall-mounted, stainless steel, 12" wide, 5 feet long



Total Sell: \$245.00 ea

**WS-12-72
Advance Tabco**

Shelf, wall-mounted, stainless steel, 12" wide, 6 feet long



Total Sell: \$260.00 ea

**1125
New Age**

Shelf, wall-mounted, solid w/marine edge design with turned down edges, aluminum construction, 12"W x 36"L, mounted on heavy duty shelf brackets, 18 ga., NSF



Total Sell: \$59.00 ea

**1126
New Age**

Shelf, wall-mounted, solid w/marine edge design with turned down edges, aluminum construction, 12"W x 48"L, mounted on heavy duty shelf brackets, 18 ga., NSF



Total Sell: \$65.00 ea

**BIN27-02
Carlisle**

Ingredient Bin, 27 gallon capacity, clear sliding lid, heavy duty casters, polyethylene, white



Total Sell: \$189.00 ea

**9W2700 GRAY
Rubbermaid**

BRUTE® Roll-Out Container, 50 gallon, w/lid, gray



Total Sell: \$89.00 ea

**9W2700 BLUE
Rubbermaid**

BRUTE® Roll-Out Container, 50 gallon, w/lid, blue

Total Sell: \$89.00 ea



**FG265000BLA
Rubbermaid**

Universal Drum Dolly, 24-3/8"D x 7-1/7"H, black

Total Sell: \$89.00 ea



**141-1088
FMP**

Bradley Reserve Roll Toilet Tissue Dispenser, holds 2 rolls, 5-9/16" x 5-3/16" x 10-3/8"H, surface mounted, locking hinged door, stainless steel

Total Sell: \$69.00 ea



**720-1
Piper Products/Servolift Easte**

Tray Cart, single tray stack, open style, stainless steel, with 1 push handle, for 16" x 22" trays, with tray stop, 4" swivel casters

Total Sell: \$489.00 ea



**705
Lakeside Manufacturing**

Store 'N' Carry Dish Truck, single shelf, maximum dish size 16 1/4", 2 columns, stainless steel base and dividers, holds about (100) 9" plates & (66) 5 or 7" plates, perimeter bumper

Total Sell: \$1,199.00 ea



**KPC-100
Bar Maid/Glass Pro**

KP Cart, 3/4" steel pipe, ergonomic handle, powder coat finish, 8" non-marring wheels w/steel roller bearings, includes kick stand

Total Sell: \$149.00 ea



**FG331700BLA
Rubbermaid**

Max System™ Rack, 18 slot end loader for full size insert pans, 23-3/4"L x 18-5/8"W x 67-7/8"H, heat-resistant plastic construction, 5" non-marking swivel casters (2 locking & 2 non-locking), assembly required, USDA, NSF, black

Total Sell: \$329.00 ea



**100487
Cambro**

Camrack® Cup Rack, w/extender, full size, 19-3/4" x 19-3/4" x 5-5/8", 16 compartment, 4-3/8" x 4-3/8", 4-1/4" max height, soft gray

Total Sell: \$18.00 ea



**36S800-151
Cambro**

Camrack® Glass Rack, w/4 extenders, full size, 36 compartments, 2-7/8" max. dia., 8-1/2" max. height, soft gray



Total Sell: \$36.00 ea

**49S800-151
Cambro**

Camrack® Glass Rack, w/4 extenders, full size, 49 compartments, 2-7/16" max. dia., 8-1/2" max. height, soft gray



Total Sell: \$36.00 ea

**C-15
Hatco**

Compact Booster Heater, Electric, 6-gallon storage capacity, electric operation, 15-KW, stainless steel front, Castone tank



Total Sell: \$1,499.00 ea

**C-6
Hatco**

Compact Booster Heater, Electric, 6-gallon storage capacity, electric operation, 6-KW, stainless steel front, Castone tank



Total Sell: \$1,249.00 ea

**KR18-24RD
Krowne Metal**

Royal 18 Series, Raised Liquor Display Unit, 24"x24" OA (to match speedrail depth), 7" backsplash, steps w/guard rails, s/s top, front, sides & legs



Total Sell: \$499.00 ea

**W20A
Varimixer**

Mixer, Food, 21-qt. capacity bowl, variable spd, 1HP motor, powder coating finish, 15 min. timer, includes: s/s bowl, s/s dough hook, s/s wire whip, s/s flat beater, thermal overload protection, #12 attachment hub, s/s lid, bowl screen



Total Sell: \$2,995.00 ea

**BOWL-SST340
Hobart**

40 QT. Bowl



Total Sell: \$976.00 ea

**60DS
Alfa International**

Spiral Dough Hook, 60 quart, cast aluminum, replaces Hobart #295174, NSF



Total Sell: \$219.00 ea

**MX-SS-300
Advance Tabco**

Equipment Stand with adjustable undershelf, 30" x 30", 24" high, stainless top, legs & undershelf, with utensil rack



Total Sell: \$769.00 ea 100420

Focus Foodservice

Regal (K7015) Coffee Maker, 12 to 55 cup capacity, black satin banded exterior, 110-120v/60/1-ph, NSF, UL

Total Sell: \$129.00 ea



**56050-1
Nemco**

CanPRO® Can Opener, compact, permanent, cuts from the side, along the lid's outer seam, gearless drive, holds up to #10 cans, s/s & aluminum construction, NSF



Total Sell: \$280.00 ea 15001

Vollrath Company L.L.C.

InstaCut™, manual, 3/8" dice, table top

Total Sell: \$179.00 ea



**T4
Star Mfg.**

Pop-Up Toaster, 4-slice bread/bagel toaster, 1-3/16" slots, stainless steel finish, approximately 300 slices/hour, electronic timer, dual thermostats, includes 3' cord & plug, 120v, 1800w, 15 amps, NEMA 5-15P, UL



Total Sell: \$399.00 ea ET26-4

Hobart

Toaster, Pop-Up, 4-slice bread toaster, 1" wide slots, approximately 290 slices/hour cap., solid-state temperature sensor & probes, removable crumb tray, s/s exterior, 120/208/240/60/1 VAC 3-Pole/4-wire, 2.8 kw

Total Sell: \$899.00 ea



**QCSE2300H
Star Mfg.**

Holman QCS® Conveyor Toaster, electric, horizontal conveyor, 1-1/2" product opening, 10" W belt (2 slices), attached load-up tray, quartz infrared heaters, electronic controls, 500 slices/hour, stainless steel construction, UPS DEMO UNIT



Total Sell: \$695.00 ea TQ-10

Hatco

Toast-Qwik® Conveyor Toaster, horizontal conveyor, countertop design, all bread types toaster, approximately 5 slices/minr capacity, 1.8 kw, 5 slice capacity/min, 4" legs, UL, NSF, CSA, CE

Total Sell: \$695.00 ea



WFG250
Waring

Tostato Supremo™ Large Toasting Grill, electric, single, 14-1/2" x 11" cooking surface, hinged auto-balancing top plate w/heat resistant handles, flat cast iron plates, adjustable thermostats 570°F (300°C), indicator lights, brushed s/s body & removable drip tray, 120V, 15amps, UL, NSF



Total Sell: \$537.96 ea

3600P
Globe

Manual Slicer, 13" dia. PreciseEdge™ knife, top mounted knife sharpener, stainless steel construction, gear-driven, antimicrobial protection, knife cover interlock, dual gear thickness adjustment, EZ-Glide™ table, open base design, ETL, NSF, 1/2 Hp, 115v/60/1, 7 amps



Total Sell: \$3,195.00 ea

825A
Berkel Inc.

Slicer, manual, 45° angled gravity feed, 10" dia. C.S. knife, cast aluminum base, belt-driven blade assembly, built in sharpener, 6' cord & plug, 1/3 HP



Total Sell: \$799.00 ea

99217
New Age

Slicer Stand, 23-3/8"W x 30"H x 20"D, holds (6) 18" x 26" pans on 3" centers, 5" casters with total locks (#C566)



Total Sell: \$499.00 ea

10044
Carlisle

Cateraide™ Food Carrier, top loader, insulated polyethylene, smooth interior, 24 qt., holds one 8" deep full size pans, Nylex latches, brown, NSF



Total Sell: \$189.00 ea

H-339-UA-8C
CresCor

Cabinet, Mobile Heated, half-height, insulated, universal slides for 12" x 20" thru 18" x 26" pans, capacity 8 sets, anti-microbial latches, aluminum construction, heavy duty 5" swivel casters; 2 with brakes, ENERGY STAR®, CSA



Total Sell: \$2,845.20 ea

GRAL-42
Hatco

Glo-Ray® Infrared Foodwarmer, standard wattage w/lights, tubular metal heater rod, aluminum construction, 855 watts



Total Sell: \$249.00 ea

HL-54
Hatco

Glo-Rite® Display Light, strip type w/aluminum housing & toggle switch, 54" long, 240 watts



Total Sell: \$199.00 ea

72675
Vollrath Company L.L.C.

Cayenne® Heat Strip, 24" Cord & Plug, Medium Wattage, 6' cord, 5-15P, one-year parts & labor warranty, additional one-year parts warranty on cal-rod element, UL, CUL, NSF, USA made

Total Sell: \$229.00 ea **FDW-2X**
Hatco



Flav-R-Fresh® Holding and Display Cabinet, counter model, two doors, w/interior multi-purpose rack w/o rack motor, 1420W

Total Sell: \$898.00 ea



GRSDH-30
Hatco

Glo-Ray® Merchandising Warmer, counter model, 6 rods, pass thru design, w/ horizontal shelf, stainless/aluminum construction, 970 watts

Total Sell: \$499.00 ea **3613-120**
Randell



Model GRSDH-30

Hot Food Table, 120V elec, 48"L, 30"D, 36"H, (3) 12"x20" sealed wells, stationary modular, open shelf base, s/s top & ends, full length 8"D NSF workboard & s/s 8"D plate shelf, 6" adjustable legs

Total Sell: \$1,895.00 ea



3613 Shown with Optional Casters

EP304
Duke Manufacturing

Aerohot Steamtable Portable Hot Food Unit, 58-3/8"L, electric, (4) 12"x20" hot food wells w/exposed elements, infinite controls, s/s top w/1/2" thick x 7" wide poly carving board, s/s open base w/undershelf, 5" casters

Total Sell: \$1,599.00 ea **99765**
Vollrath Company L.L.C.



EP303 - 3-well Electric Hot Food Unit Portable

Water/Spillage Pan, Full Size, Stainless, standard bead, 20 21/32"x12 7/16"x6 3/8" Outside, USA made

Total Sell: \$69.00 ea



1000-TH/III
Alto-Shaam Inc.

Halo Heat® Slo Cook & Hold Oven, electric, low-temp, 120 lb capacity each - (8) full-size pans, electronic controls, probe, SureTemp heat recovery system, stainless steel construction, 3-1/2" casters; 2 rigid, 2 swivel with brakes, EcoSmart™

Total Sell: \$4,695.00 ea **HDW-2**
Hatco



Warming Drawer Unit, Free Standing, two drawers, holds standard size pans up to 6" deep, stainless steel construction, thermostatic controls, 900 watts, standard drawer pan, 120v/60/1ph, 900watts, 7.5 ams, NEMA 5-15P

Total Sell: \$1,849.00 ea



Model HDW-2 with optional 6" (15cm) stainless steel legs

**HDW-1N
Hatco**

Total Sell: \$1,049.00 ea

Warming Drawer Unit, Free Standing, narrow, one drawer, includes (1) standard 6" food pan per drawer, stainless steel construction, thermostatic controls, 450 watts



**HFS2
Merco**

Total Sell: \$1,895.00 ea

Stainless steel exterior, Four-inch legs included, Aluminized steel interior, Adjustable locking vents, Fiberglass insulation on all sides, Separate thermostatic controls for each drawer, Two drawers, each with a storage capacity of nearly one cubic foot. Benefits: Easy-to-read thermometers clearly mark food danger zone, Positive closing drawers balanced for total stability when fully opened, Included stainless steel pan liners fit six-inch deep, full or fractional pan sizes



**E9451-HP34CDN
Toastermaster**

Total Sell: \$1,259.00 ea

Heater/Proofer Cabinet, mobile, full-size, non-insulated, (34) 18" x 26" sheet pan capacity w/1-1/2" OC, mechanical controls, removable bottom mount heat console, Lexan lift-off door w/full length door handle, magnetic door gaskets, welded aluminum construction, 5" swivel casters with brakes, 120v/60/1ph, 15 amps



**SS-10T
Wells**

Total Sell: \$109.00 ea

Food Warmer, top-mount, built-in, electric, for 11-quart round inserts, wet/dry operation, thermostatic control, stainless steel interior, Wellslok



**30SCBBC
Star Mfg.**

Total Sell: \$1,349.00 ea

Star Grill-Max Pro® Hot Dog Grill, roller-type, bun holder w/clear door, Duratec™ rollers, capacity 30 hot dogs & 32 buns



**WCO500
Waring**

Total Sell: \$499.00 ea

Convection Oven w/Rotisserie, countertop, electric, 1.5 cu ft., (4) half size sheet pan capacity, clear tempered glass window, includes s/s baking sheet & (3) chrome-plated baking racks, spit and skewer, NEMA 5-15P, 120V, 1700 watts, 14a, 50/60Hz, NSF, UL & CUL listed



**DF-12L
Admiral Craft**

Total Sell: \$349.00 ea

Fryer, counter model with faucet, 11-1/2" x 18" x 16", single fry pot, electric, 25lb. capacity/hour, temp. range from 120° to 375°F, includes (1) fryer basket, stainless steel construction, 208v/60/1-ph, 15 amps, 3250 watts, NSF, UL, CE



**WDF75RC
Waring**

Total Sell: \$249.00 ea

Countertop Deep Fryer, electric, 8-1/2 lb. capacity, twin wire baskets (3 lb. food capacity each), hinged heating element, removable s/s tank, 30-minute timer, 120v/60/1-ph, 2400W, UL, NSF



TMC-49-S
True Food Service Equipment

Mobile Milk Cooler, FORCED-AIR, (12) crates, s/s drop front/hold-open flip-up lids, lock, 33-38°F, stainless exterior, white aluminum interior with 300 stainless steel floor, (3) heavy duty floor racks, digital therm., 4" castors, 1/3Hp, 115v/60/1-ph, NEM



Total Sell: \$2,295.00 ea **DS60SLT**
Perlick Corporation

Draft Beer Dispenser, self-contained refrigeration system, two-keg capacity (LESS TAPPING EQUIPMENT), stainless steel exterior, door locks, 1/4 hp, 5.9 amps



Total Sell: \$2,142.00 ea

TDD-1
True Food Service Equipment

Draft Beer Cooler, (1) keg capacity, s/s counter top, black vinyl exterior & (1) door with lock, galvanized interior with 300 stainless steel floor, (1) column type beer faucet, castors, self contained refrigeration, 4.4 amps., 1/5 HP 115/60/1



Total Sell: \$1,135.00 ea **GDM-12F**
True Food Service Equipment

Freezer Merchandiser, one-section, -10° F, 12 cu. ft., (3) shelves, laminated vinyl exterior, white interior w/300 series s/s floor, (1) triple-pane thermal glass hinged door, fluorescent interior lights, 1/3 HP, 115v/60/1-ph, 6.4 amps, (depth does not include 1" for rear bumpers), MADE IN AMERICA



Total Sell: \$2,646.00 ea

37065
Vollrath Company L.L.C.

Signature Server® Classic 34" high REFRIGERATED STANDARD Cold Pan, 60" long, 28" wide, modular, enclosed base, with stainless steel 19 7/8" x 50 1/4" x 8" deep top well, 4-pan size, 1/4 hp compressor, 4.9 amps, NEMA 5-15P, UL listed Double sided breath guard, customer side plate rest



Total Sell: \$5,750.00 ea **1100**
Ardco

CUSTOM - 1100 SERIES Aluminum slider doors. Includes ONE SET of two doors, silver smooth aluminum frame, 2-pan normal temp glass with standard handles. Door and frame heaters standard. Includes 3 light fixtures, ballasts pre-wired and 10 white epoxy flat shelves with rear-entry. Door dimensions are 23-7/16" x 61-1/2". Net opening of 4'-3/4" x 64-13/16". 120v / 60hertz

Total Sell: \$1,599.00 ea

AS-36 GR4
American Tables & Seating

Standard Booth, single, 46" long x 36" high, plain back, removable sinuous spring seat w/connecting links, upholstered, heavy duty hardwood frame, 4-3/4" high vinyl kick base, finished outside back, COM/grade 4 uph.



Total Sell: \$399.00 ea **ROY RTT 3636T**
Royal Industries

Reversible Table Top, rectangular, 36" x 36", t-molding edges, melamine tops, oak/walnut (FLYER NET PRICING)



Total Sell: \$49.70 ea

MET-STN24
John Boos

Metropolitan Kitchen Island Table,
24" x 24" x 4", square, Hard Rock
end Maple grain top, varnique finish,
1-1/2" square tubing, 16 gauge
brushed stainless steel base, welded
construction

Total Sell: \$499.00 ea



DX11988714
Dinex

Translucent Lid, w/straw slot, fits
4GC9 and 4GC12 9 oz. to 12oz.
plastic tumbler, Cambro NT8,
Carlisle 5526 & 5108, case of 1,000
(1198ST/8714)

Total Sell: \$38.00 cs

